



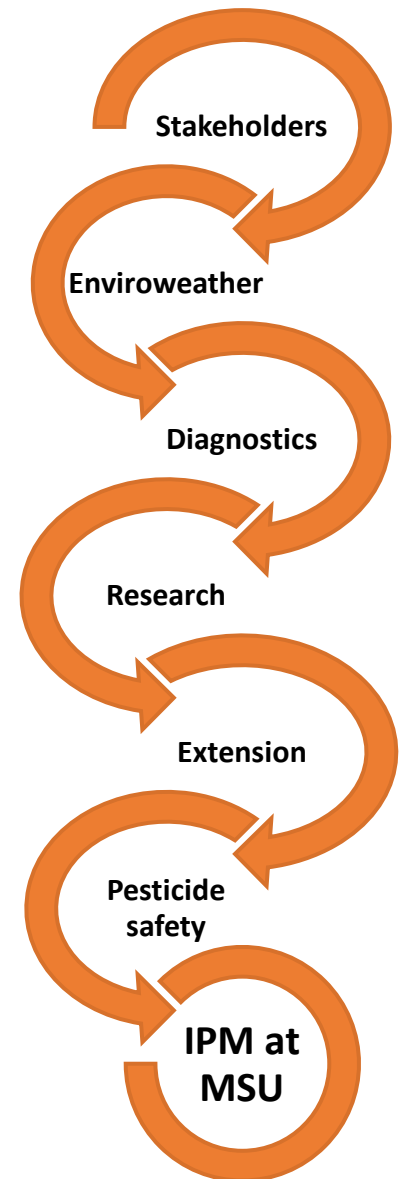
# INTEGRATED PEST MANAGEMENT PROGRAM

Dear Partner:

Farming in Michigan is under pressure from rapidly changing environmental, economic and regulatory forces. Growers need solutions to address challenges due to climate change, razor thin profit margins, invasive species and limited management tools. These challenges require science-based and timely integrated pest management (IPM) resources. The Michigan State University (MSU) IPM Program continues to build on its legacy of optimizing outreach tools and strategies to improve IPM awareness, knowledge and adoption for agriculture, institutions and communities through robust state and national networking, coordination and communication.

The IPM Program recently wrapped up a four-year National Institute of Food and Agriculture sponsored project (2017-70006-27175). We wanted to take this opportunity to share with our partners and collaborators the important work we have accomplished together. We would also like to acknowledge the extensive expertise and engagement of our faculty at MSU, our incredible staff and the hundreds of grower collaborators in Michigan and beyond.

Best,  
Erin Lizotte  
MSU IPM Coordinator





# INTEGRATED PEST MANAGEMENT PROGRAM

## IPM HIGHLIGHTS 2018-2021



365 Educational Programs



20 Demonstration Plantings

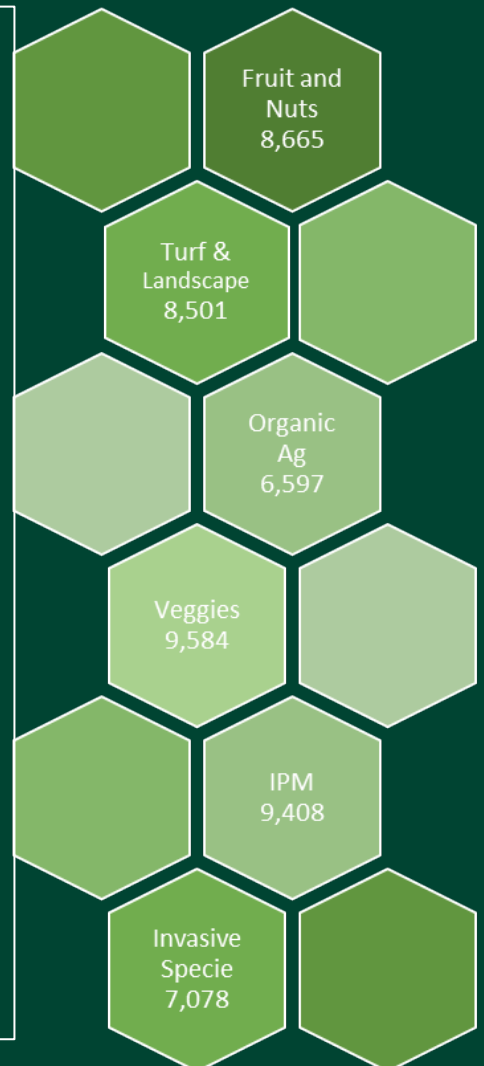


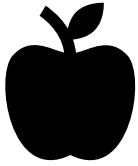
1,771 Educational Articles



227,961 Stakeholders Reached

## MSUE NEWS SUBSCRIBERS





### SPECIALTY CROPS

- Four online IPM courses (including the IPM Academy) garnered 1,045 participants over the project duration.
  - 80% of 2018 IPM Academy (IPMA) graduates committed to adopting one or more IPM practices based on participation.
  - 90% of 2019 IPMA graduates "would utilize, expand or improve their IPM practices based on participation."
  - 86% of 2020 IPMA graduates "would use or expand their IPM practices based on participation."
  - 50% of 2021 IPMA graduates reported improved ability to "make better past management decisions based on participation."



### AGRONOMIC CROPS

- Researchers disseminated their findings on 26 current and on-going research projects via 57 cover crop educational events with 3,500 participants during the project period.
- 2019 field days attracted 435 participants, 60% of survey respondents indicated they intended to "change use of cover crops and/or spray programs based on learned information."



### COMMUNITIES

- 188 Master Gardeners trained to teach Smart Gardening and 170 people trained to use gardening outreach kits in 15 lesser-served counties.
- Smart Gardening with Vegetables 101 Webinar Series garnered 198 participants. 79% of respondents will plant flowers near vegetables for pollinators; 67% never use pesticides on open flowers to protect pollinators; 93% increased knowledge of sustainable practices that they want to implement.
- 253 Smart Gardening educational programs and events, reaching 11,269 individuals. One conference alone attracted 338 participants from 37 counties. Evaluations showed more than 70% of participants plan to increase floral resources for pollinators.



### POLLINATOR HEALTH

- Collaborated with North Dakota State University to develop a Smart Gardening publication on what makes a pollinator rare or endangered.
- Peer-reviewed publications - 2; Non-peer-reviewed publications - 83; Presentations - 281, People reached: 18,502.



## LOOKING AHEAD

We are pleased to announce that the MSU IPM Program was awarded a USDA NIFA Extension Implementation Program grant covering 2021-2024. In addition to supporting the efforts of the IPM coordinator and communications manager, this new project supports dozens of MSU faculty as well as the nine MSU Extension educators currently focused on IPM around the state. The objectives of this project respond to priorities identified by Michigan practitioners, guided by a stakeholder alliance and prioritized by the IPM Roadmap. For more information on the IPM Program visit us at [ipm.msu.edu](http://ipm.msu.edu).

## CURRENT CONTRIBUTORS



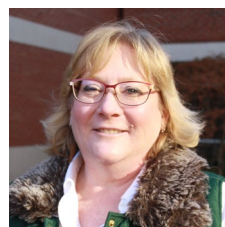
**Isabel Branstrom**  
Consumer Horticulture  
Educator  
[branstr2@msu.edu](mailto:branstr2@msu.edu)



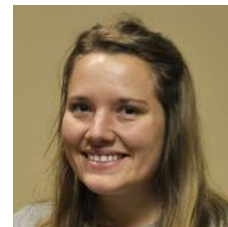
**Rebecca Finneran**  
Consumer Horticulture  
Educator  
[Finneran@msu.edu](mailto:Finneran@msu.edu)



**Ana Heck**  
Apiculture Educator  
[heckanar@msu.edu](mailto:heckanar@msu.edu)



**Amy Irish-Brown**  
Tree Fruit IPM Educator  
[irisha@msu.edu](mailto:irisha@msu.edu)



**Monica Jean**  
Field Crops Educator  
[atkinmon@msu.edu](mailto:atkinmon@msu.edu)



**Jeremy Jubenville**  
Floriculture Educator  
[jubenvi3@msu.edu](mailto:jubenvi3@msu.edu)



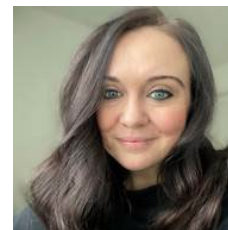
**Heidi Lindberg**  
Nursery & Greenhouse  
Educator  
[wollaege@msu.edu](mailto:wollaege@msu.edu)



**Erin Lizotte**  
IPM Coordinator  
[taylo548@msu.edu](mailto:taylo548@msu.edu)



**David Lowenstein**  
Consumer Horticulture  
Educator  
[lowenst6@msu.edu](mailto:lowenst6@msu.edu)



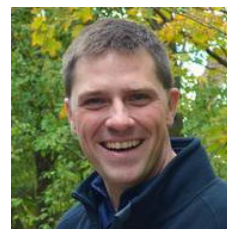
**Mallory Marienfeld**  
IPM Communications  
Manager  
[fourni49@msu.edu](mailto:fourni49@msu.edu)



**Ben Phillips**  
Vegetable Crops  
Educator  
[benp@msu.edu](mailto:benp@msu.edu)



**Mike Reinke**  
IPM Educator  
[reinkem3@msu.edu](mailto:reinkem3@msu.edu)



**Ben Werling**  
Vegetable Crops  
Educator  
[werlingb@msu.edu](mailto:werlingb@msu.edu)

MSU is an affirmative-action, equal-opportunity employer, committed to achieving excellence through a diverse workforce and inclusive culture that encourages all people to reach their full potential. Michigan State University Extension programs and materials are open to all without regard to race, color, national origin, gender, gender identity, religion, age, height, weight, disability, political beliefs, sexual orientation, marital status, family status or veteran status. Issued in furtherance of MSU Extension work, acts of May 8 and June 30, 1914, in cooperation with the U.S. Department of Agriculture. Quentin Tyler, Director, MSU Extension, East Lansing, MI 48824. This information is for educational purposes only. Reference to commercial products or trade names does not imply endorsement by MSU Extension or bias against those not mentioned.

